

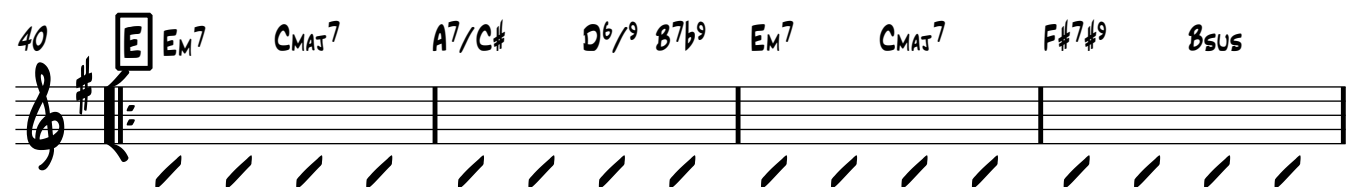
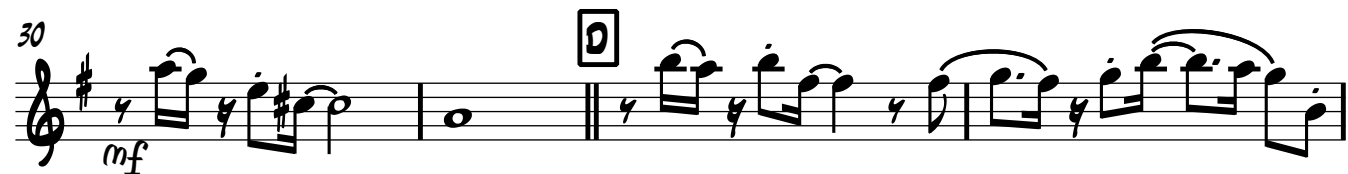
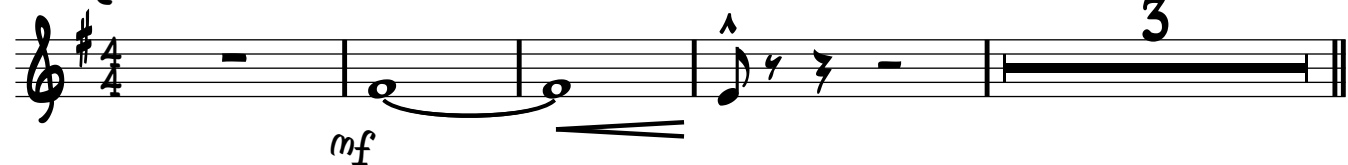
TENOR 2

KIMO SAMBA

COMPOSED BY: MIKE SMITH

ARRANGED BY: GERARD HARRISON

♩=100 (APPROX)



V.S.

TENOR 2

44 E_m^7 C_{MAJ}^7 A^7/C^\sharp $D^6/9$ B^7b^9 E_m^7 C_{MAJ}^7 $F^\sharp7^\sharp9$ B_{SUS}

48 F 4 G 8

60 H mf

63

65

68 I mf 2

74 J mf

78

80

83 K ff